



OCEAN AND COASTAL SYSTEMS DIRECTORATE

DEPARTMENT OF OCEANOGRAPHY AND HYDROGRAPHY RESEARCH



Intergovernmental
Oceanographic
Commission

2014-2015 Annual Report

SEA LEVEL MONITORING, DATA ANALYSIS & PREDICTION IN KENYA

KMFRI RESEARCH REPORT



JUNE 2015

This report is prepared by Kenya Marine and Fisheries Research Institute; in collaboration with the Intergovernmental Oceanographic Commission (IOC) of UNESCO.

Copyright © 2015 Kenya Marine and Fisheries Research Institute

Reproduction of this publication for educational or other non-commercial purposes is authorized without prior written permission from the copyright holder provided the source is fully acknowledged.

Reproduction of this publication for resale or other commercial purposes is prohibited without prior written permission of the copyright holder.

Cover Image: KMFRI Mombasa tide gauge station, photos by Samuel Ndirangu.

Citation:

Magori, C., Ndirangu, S., Kosieny, D1., Ochengo, J., Onsare, Z., (2015): Sea Level Monitoring, Data Analysis and Prediction in Kenya. KMFRI, Mombasa.

Copies are available from:

The Director

Kenya Marine and Fisheries Research Institute

P.O. Box 81651- 80100

Mombasa, KENYA

Telephone: +254 41 475151/2/3/4/5

FAX: 254 41 475157

E-mail: director@kmfri.co.ke

Internet: <http://www.kmfri.co.ke>

DISCLAIMER

The designations employed and presentations of material throughout this publication do not imply the expression of any opinion, whatsoever, on the part of the Kenya Marine and Fisheries Research Institute or its partner institutions concerning the legal status of any county, districts, city or area or of its authorities, or concerning the delimitation of its frontiers or boundaries. The views expressed in this publication are those of the authors and do not necessarily reflect the views of the KMFRI or its partner institutions. Mention of the names of firms or commercial products does not imply endorsement.

Acknowledgement

We are very grateful to IOC/UNESCO through ODINAFRICA and WIOMSA for close collaboration that has supported sea level monitoring through provision of equipment and capacity building. Special thanks to Patrick Caldwell and Nikolai Turetsky of University of Hawaii Sea Level Centre (UHSLC) for the assistance provided. KMFRI management has supported the sea level monitoring programme in Kenya since inception. Many thanks to KMFRI team participating in this programme.

PREFACE

The Intergovernmental Oceanographic Commission (IOC) of UNESCO developed a Global Sea Level Observing System (GLOSS) program in 1985 to address the growing concern about the rise in mean sea level around the globe. Through GLOSS, a network consisting of about 300 tide gauges have been installed throughout the globe. The regional component of GLOSS in the Western Indian Ocean (WIO) Region is through IOC's Regional Committee for the Co-operative Investigations in the North and Central Western Indian Ocean (IOCINCWIO), which was established in 1979 by resolution XI-9 of the eleventh session of the IOC Assembly.

IOCINCWIO coordinates development and implementation of regional oceanographic research activities in the member states in the region (Comoros, French Indian Ocean islands, Kenya, Madagascar, Mauritius, Mozambique, Seychelles, South Africa and Tanzania).

Sea level observations, analysis and interpretation of data have been one of the areas of concern to IOCINCWIO. Several sessions of IOCINCWIO have been held in the region and among the recommendations is the establishment of a regional tide gauge network and enhancement of scientific and technical capacity in tide gauge installation and maintenance, sea level data analysis and interpretation as well as products preparation.

Although there is plenty of sea level data available in the WIO region, it has not been subjected to thorough analysis despite the fact that there is sufficient scientific capacity for analysis and interpretation of data. Tide predictions in particular are only generated in a few countries in the region by local scientists while other countries rely on services from outside to produce tide tables.

In a deliberate effort to encourage the use of sea level data in the region, IOC of UNESCO through its Division of Ocean Data and Information Network for Africa (ODINAFRICA) and the Western Indian Ocean Marine Science Association (WIOMSA) have supported the initiative for tidal analysis and prediction in the WIO region.

The objective of the initiative is to provide an insight on the status of sea level monitoring in some selected locations in the WIO region through preparation of comprehensive national reports. This involved collection and analysis of sea level data from selected tide gauge stations and generation of tidal predictions for those stations.

Kenya is actively participating in the regional and global initiative of monitoring sea level variations. Kenya Marine and Fisheries Research Institute (KMFRI) is the institution responsible for the management of two sea level monitoring stations in Mombasa and Lamu. The two stations are part of the global sea level monitoring network. Two KMFRI Technicians are attached to each station. Data generated is transmitted in real-time via satellite links to global sea level data centre based at the University of Hawaii Sea Level Centre (UHSLC) in the United States. A copy of same data is also archived at the Kenya National Oceanographic Data Centre (KeNODC).

The two Kenyan stations are also dedicated components of the Indian Ocean Tsunami Warning System (IOTWS). Data from both stations (and others like them in the region) can be used to either confirm or cancel a tsunami warning throughout the region. In addition, the stations can detect and record other extreme oceanic events such as storm surges and tropical cyclones.

The first part of this report is a description of the historical and current status of the sea level network in Kenya, availability of data from stations, as well as scientific and technical capacity available in the country. The second part is a presentation of the results of harmonic analysis of time series of sea level data and tide predictions for Mombasa and Lamu.

CONTENTS

1.0	Introduction	1
1.1	Country Status on Sea Level Observations and related activities	1
1.2	Kenya's Participation in Sea Level Monitoring Programme	1
1.3	Status of GLOSS Stations in Kenya	2
1.3.1	Mombasa Tide Gauge	2
1.3.2	Lamu Tide Gauge	2
1.3.3	Additional Stations by KMD	5
1.4	Capacity (Technical and Scientific)	9
2.0	Objectives	9
3.0	Data from Mombasa and Lamu Stations	10
3.1	Data Selection for Tidal Analysis	10
4.0	Methodology	11
4.1	Analysis and Interpretation	14
5.0	Concluding Remarks and Recommendation	17
ANNEX I:	Harmonic Constituents for Kenyan Stations	19
ANNEX II:	High – Low Predictions for Mombasa and Lamu	27
ANNEX III:	Hourly Predictions for Mombasa and Lamu	

1.0 Introduction

1.1 Country Status on Sea level observations and related activities/network

The Intergovernmental Oceanographic Commission (IOC) of UNESCO developed a Global Sea Level Observing System (GLOSS) program in 1985 to address the growing concern about the rise in mean sea level around the globe. The objective of GLOSS was to provide high quality standardized data from which valuable sea level products can be produced for international oceanographic such as World Ocean Circulation Experiment (WOCE), Tropical Oceans Global Atmosphere (TOGA) and regional research programmes as well as for practical application on a national level. Kenya is one of the countries participating in GLOSS and has already received support and assistance in terms of training of our specialists and provision of equipment through IOC.

1.2 Kenya's Participation in Sea Level Monitoring Program

Kenya lies along the equator on the east coast of Africa in the Western Indian Ocean (WIO) region. It has a land surface area of 590,000 km² and a coastline of about 600 km. The coastline extends from Shimoni on the south near the border with Tanzania to Kiunga on the north near the border with Somalia (Figure 1).

In Kenya, the first gauge was installed in 1933 in Kilindini harbour, Mombasa by the former East Africa Railways and Harbours Corporation (EARHC) and was in operation until 1956. Another gauge (Munro gauge) was installed in the 1960's at the Kipevu pilot jetty at the present Kenya Ports Authority Headquarters and operated intermittently upto 1976. However, little data is available from this gauge. In 1975/6, a team from the Permanent Service for Mean Sea Level (PSMSL) collected one-year continuous data.

In the late 1980's, the University of Hawaii in collaboration with the TOGA Sea Level Centre established a network of sea-level stations, which continue to provide useful information. Realising the importance of sea level data for navigation and harbour planning, beach protection and development and overall marine research, Kenya Marine & Fisheries Research Institute (KMFRI) requested for a tide gauge through IOC-UNESCO from the University of Hawaii (UH) in June, 1986 to start its tide gauge network. Following that request, the University of Hawaii donated a tide gauge, which was installed at Liwatoni jetty in Kilindini harbour, Mombasa. A second tide gauge was installed by UH in Lamu in 1996. KMFRI is responsible for maintaining both the Mombasa and Lamu tide gauge stations. Two KMFRI Technicians are attached to each station.

1.3 Status of GLOSS Stations in Kenya

1.3.1 Mombasa Tide Gauge (Latitude: 04° 04' S; Longitude: 039° 039' E)

A Leopold Stevens gauge was installed in Mombasa in 1986 with technical assistance from University of Hawaii Sea Level Centre (UHSLC). This was later changed to a Fisher and Porter float gauge in 1991. The station continues to operate well and data is available. Some of the benchmarks were removed during construction work at the harbour where the gauge is located. The Mombasa gauge is float type installed on a stilling well. The station is equipped with modern data logger, measuring sea level every minute and storing on diskette at 15 minutes interval.

In August 2006, a major upgrading of the Mombasa tide gauge was carried out with the assistance of field technicians from UHSLC. This involved a thorough overhaul of the existing equipment, installation of additional sensors (pressure and radar sensor). The station was also equipped with satellite data transmission facilities to enable near real-time data access. Mombasa tide gauge is a Principal station on the GLOSS network and also a dedicated component of the proposed Indian Ocean Tsunami Warning System (IOTWS).

1.3.2 Lamu Tide Gauge (Latitude: 02° 17' S; Longitude: 040° 54' E)

The Lamu gauge is a float type installed on a stilling well. It was installed in 1996 by the University of Hawaii Sea Level Centre (UHSLC). The station is equipped with modern data loggers, measuring sea level every minute and storing on diskette at 15 minutes interval. In addition, the Lamu tide gauge is equipped with a satellite data transfer device to enable real time access to data. Earlier, there was a Valeport BTH 700 gauge was installed at the end of 1988 but was not operational since 1992. This was due to a problem with electrical connection on the jetty where it was installed. During the time the gauge was out of operation, data was collected manually at half hour interval during day time (0900 to 1600 HRS).

In August 2006, the Lamu tide gauge station underwent a major overhaul of equipment. The station was also fitted with additional sensors (pressure and radar sensor). Lamu is also a principal station on the GLOSS network and a dedicated component of IOTWS. Data from this station (and others like it in the region) can be used to confirm or cancel a tsunami warning throughout the region.

Both stations Mombasa and Lamu stations continue to operate well and data is available. Kenya is also coordinating the regional component of GLOSS. The profiles of both historical and operational stations in Kenya are presented in Tables 1 and 2.

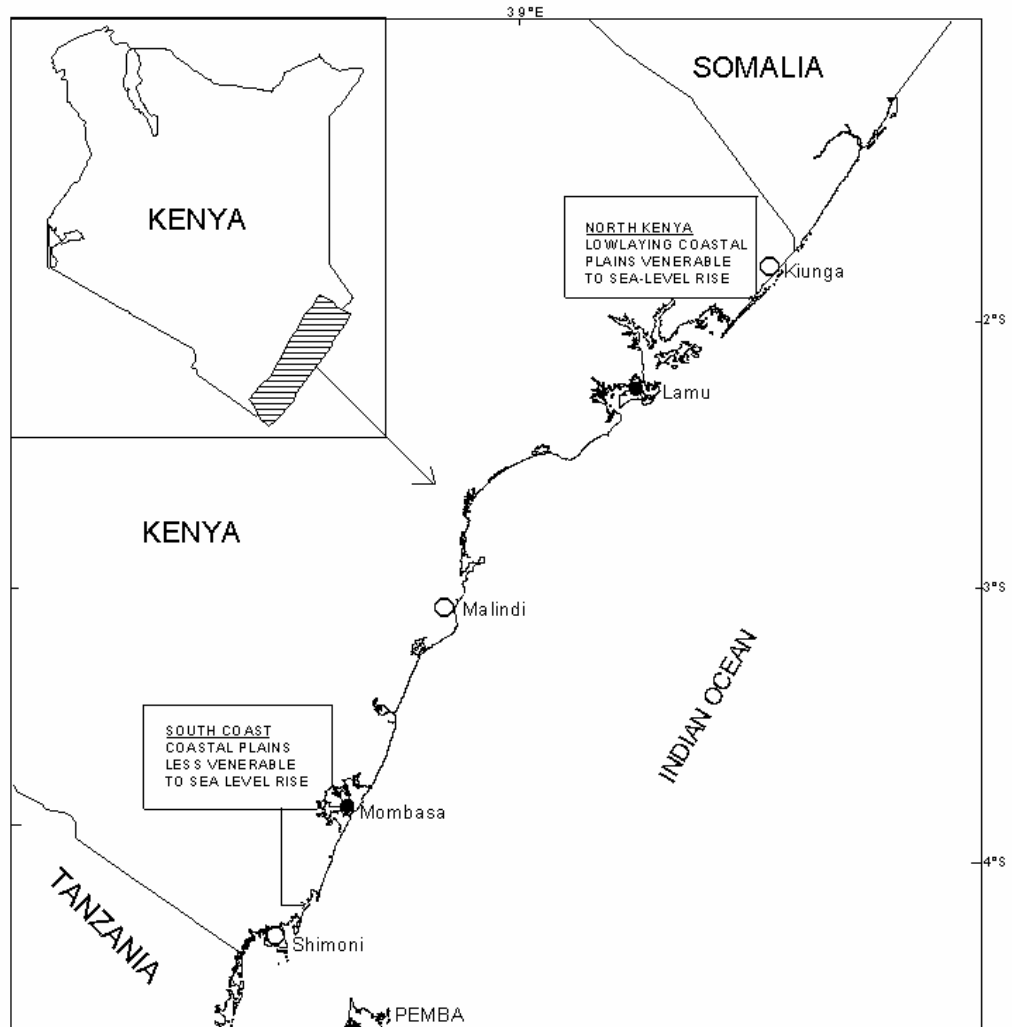


Fig 1: Map of Kenya Coastline showing location of installed tide gauge stations (●) and planned stations (○).

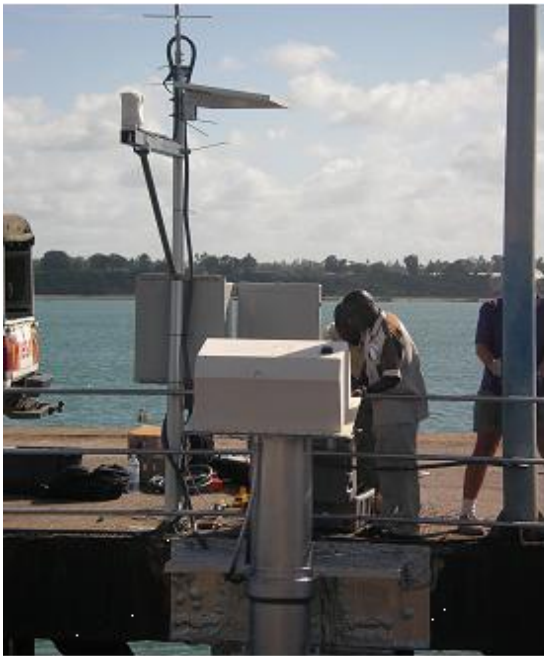


Fig 2: Photo of upgraded Mombasa tide gauge station

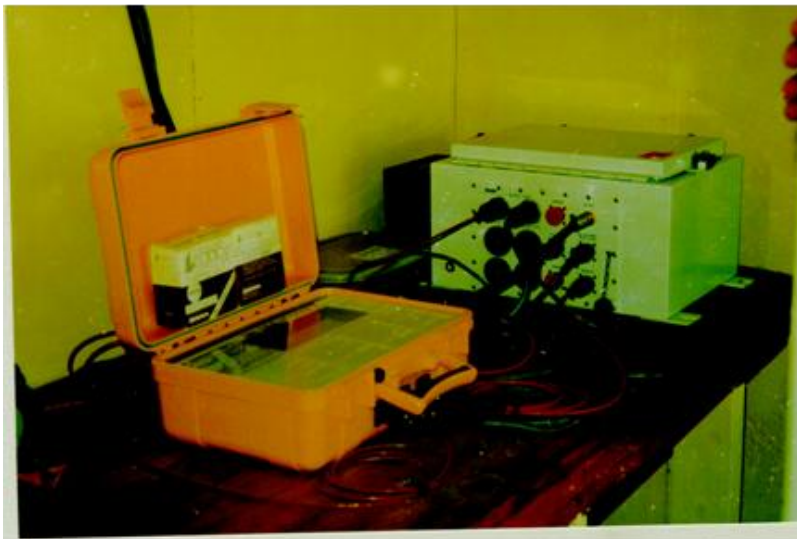


Fig 3: Photo of Lamu tide gauge station

1.3.3 Additional Stations by KMD

The Kenya Meteorological Department (KMD) is in the process of installing and testing three additional stations along the Kenyan coastline. These are at: Shimoni ($4^{\circ} 39' S$, $39^{\circ} 23' E$), Malindi ($3^{\circ} 15' S$, $40^{\circ} 08' E$) and Lamu ($02^{\circ} 17' S$, $040^{\circ} 54' E$). Photos of the 3 new stations is shown in Figs 4, 5 and 6. Once the stations are fully operational, there shall be five stations covering the Kenyan coast. The gauges are also equipped with additional sensors and transmitting data in real-time (Table 1). However, data access from those stations is restricted. Additional information can be obtained by contacting the director of KMD (director@meteo.go.ke).



Fig 4a: Stilling well of the tide gauge at the Old Jetty of Kilifi Mnarani club.



Fig 4b: Tide gauge at Kilifi Mnarani Club.



Fig5a: Wasini Island Tidal and Automatic Weather Station installed at the Old Navy Jetty



Fig 5b: The stilling well of the tide gauge at Wasini Island.



Fig 6a: Lamu Island Automatic Weather Station, at the New Fisheries Jetty of Ministry of Fisheries Development.



Fig 6b: Stilling Well of tide gauge at New Fisheries Jetty in Lamu Island.

1.4 Capacity (Technical and Scientific)

There is still limited capacity for repair and maintenance of the our tide gauges. Lack of spare parts and tools has been a major hindrance to carrying out minor repair jobs and levelling. We rely on services of technicians from UH Sea Level Centre for installation and maintenance of the two tide gauges. Regular maintenance of both gauges is supervised by KMFRI's Principal Laboratory Technologist (Mr. Jimmy Anyango) and the National Sea Level contact (Dr. Charles Magori).

Two KMFRI Technicians are attached to both stations. None of the Technicians on site has received training at PSMSL, UHLC, etc. However, a few of them have received in-service training and some additional hints during the visits to Kenya by field technicians from UHSLC. This has contributed fairly well in improving the accuracy and quality of the data.

Several Scientists at KMFRI have received post graduate training in Physical Oceanography. There is sufficient capacity on analysis and interpretation of sea level data. In addition, four Kenyan scientists have received training sponsored by IOC on Sea Level Data Analysis and Interpretation. They are Mika Odido at PSMSL, UK in 1992, Charles Magori at Dehra Dun, India in 1995, Clive Angwenyi in Cape Town, South Africa in 1998 and Antony Kibue in Oostende, Belgium in 2006.

2.0 Objectives

The objectives of this exercise are to:

- Collect and analyse sea level data from Mombasa and Lamu sea level stations in Kenya and prepare tidal predictions for the stations for the period 1 January to 31 December 2014.
- Package the tide tables in booklet format.
- Brand and market the superior tide tables produced by KMFRI.
- Build-up sea level database for detection of extreme oceanic events such as tsunamis, storm surges and tropical cyclones as part of Indian Ocean Tsunami warning System.

3.0 Data from Mombasa and Lamu Stations

The sea level data (hourly, daily and monthly means) for the Kenyan stations are available at KMFRI in JASL format. Because of our close collaboration with UHSLC, both Mombasa and Lamu stations are now transmitting data on near real-time time basis to UHSLC database. Quality Control of data is performed at UHSLC. Monthly means are also available at the Permanent Service to Mean Sea Level (PSMSL). It should be noted that the available data has some unprecedented data gaps resulting from occasional breakdown of equipment.

For Mombasa station, available data is from 1975/6 and 1986-2014.

The data available from Lamu station is in digital form and analogue charts. The digital data is from 1989, and 1996–2014 and the analogue chart is from 1990 to 1992. All the digital data from both stations are available in International data centres namely PSMSL and UHSLC. The archived data can be downloaded for free from the following web sites.

- <http://www.soest.hawaii.edu/UHSLC>
- <http://www.pol.ac.uk/psmsl/gloss.info.html>

Real-time data from both stations can be accessed via the World Meteorological Organization (WMO) Global Telecommunication System (GTS) on the UHSLC and ODINAFRICA websites using the links below:

- <http://ilikai.soest.hawaii.edu/RSL>
- <http://www.vliz.be/vmdcdata/iode>

3.1 Data Selection for Tidal Analysis

Data used in this study was downloaded from the "Research Quality" database on the UHSLC website that archives data in hourly, daily and monthly means. For Mombasa station, hourly time series data for year 1999 was selected as the base period to be used for the analysis with 2013 as the validating period. For Lamu station year 2002 was selected as the analysis period and 2013 as the validating period. This was based on the consideration that there are few data gaps (or no gaps) in the available hourly data sets for the selected years.

4.0 Methodology

The selected data was subjected to manipulation in Textpad environment in order to fit the required format that is compatible with the tidal analysis softwares mentioned below. The base period data was then subjected to harmonic analysis procedure and finally the prediction of high and low and hourly values for the specified period. Plots of hourly data and quality checks were carried out before producing tide tables for year 2014.

Harmonic analysis is a mathematical method of extracting sinusoidal components of specific frequencies from for example time series of water levels (hourly intervals). It is based on the methods of least squares. Instead of fitting a straight line to the data by varying its slope and intercept, a set of cosine (or sine) curves with given frequencies are fitted by varying amplitudes and phases, minimizing the sum of deviation from the original curve. In classical harmonic analysis, the tidal signal is modelled as a sum of a finite set of sinusoids at specific frequencies related to astronomical parameters.

Three tidal analysis softwares that were utilized in this exercise are (a) SLPR2, (b) T_TIDE and (c) Task-2000.

SLPR2 software is a FORTRAN based programme that operates under the DOS environment. It performs harmonic analysis of hourly time series observations of sea levels to extract tidal constituents, predict hourly and also the High and Low listings of sea levels. The software includes the Foreman's tidal analysis and prediction routines. Further details regarding the software can be obtained by referring to Caldwell, 1998.

T_TIDE is a set of programs that has been written in MATLAB to:

- i) perform classical harmonic analysis for time series data for periods of about one year of data (or shorter)
- ii) use nodal corrections to account for some unresolved tidal constituents, and
- iii) compute confidence intervals for the analysed components

T_Tide comprises a translation of the Foreman Tide analysis mark the theory. Further details of the theory can be found in "Classical Tidal Harmonic Analysis Including Error Estimates in MATLAB using T_TIDE", (Pawlowicz *et. al.*, 2002).

TASK-2000 software is a FORTRAN based and uses the Microsoft Excel environment. The software performs harmonic analysis and tidal predictions in form of high and low listings as well as hourly values. The software package is derived from the TIRA tidal analysis programs. For further details, please refer to Bell *et. al.*, 2000.

Table 1: Profile of Operational Stations in Kenya

Station Name	Location Lat Lon	Responsible Organisation	Collaborating Institution(s)	Type of gauge/ Manufacturer	Data Span	Mode of Transmission	Data Sources	Others Sensors	Remarks
<i>Mombasa</i>	04°4' S 39° 39'E	<i>KMFRI</i>	<i>UHSLC</i>	<i>Fisher & Porter Float gauge on stilling well</i>	<i>1986-2014</i>	<i>Near Real-time</i>	<i>-UHSLC -ODIN-AFRICA -KMFRI</i>	<i>-Radar -Pressure</i>	<i>-Significant gaps -digital data</i>
<i>Lamu</i>	02°17' S 040° 54'E	<i>KMFRI</i>	<i>UHSLC</i>	<i>-Float gauge on stilling well -UH Ref. level switch</i>	<i>1996-2014</i>	<i>Near Real-time</i>	<i>-UHSLC -ODIN-AFRICA -KMFRI</i>	<i>-Radar -Pressure</i>	<i>-Few gaps - digital data</i>
<i>Shimoni</i>	4° 39' S 39° 22' E	<i>Kenya Met Dept. (KMD)</i>	-	<i>Acoustic gauge with automatic weather station (AWT) – Sutron Corporation, USA.</i>	<i>July 2007 - 2010</i>	<i>Real-Time</i>	<i>KMD</i>	<i>-pressure -wind -temp. -atmsp. pressure -humidity</i>	<i>-Restricted data access</i>
<i>Kilifi</i>	3° 38' S 39° 51'E	<i>KMD</i>	-	<i>Acoustic gauge with AWT – Sutron Corporation, USA.</i>	<i>July 2007 - 2010</i>	<i>Real-Time</i>	<i>KMD</i>	<i>-pressure -wind -temp. -atmsp. pressure -humidity</i>	<i>-Restricted data access</i>
<i>Lamu</i>	2° 17' S 40° 54'E	<i>KMD</i>	-	<i>Acoustic gauge with AWT – Sutron Corporation, USA.</i>	<i>July 2007 - 2010</i>	<i>Real-Time</i>	<i>KMD</i>	<i>-pressure -wind -temp. -atmsp. pressure -humidity</i>	<i>-Restricted data access</i>

Table 2: Profile of Historical Stations in Kenya

Station Name	Location Lat Lon		Responsible Organisation	Collaborating Institution(s)	Type of gauge/ Manufacturer	Data Span	Data Sensors	Remarks
<i>Lamu</i>	<i>02°17' S</i>	<i>040° 54' E</i>	<i>KMFRI</i>	<i>KPA</i>	<i>Valeport BTH 700 gauge</i>	<i>1988-1992</i>	-	<i>data in analogue charts</i>
<i>Kilindini harbour - Mombasa</i>	-	-	<i>EARHC</i>	<i>KPA</i>	-	<i>1933-1956</i>	-	<i>-scant info on gauge and data</i>
<i>Kipevu Pilot Jetty - Mombasa</i>	-	-	<i>KPA</i>	-	<i>Munro gauge</i>	<i>1960 - 1976</i>	-	<i>-scant info on gauge and data</i>
<i>Kilindini harbour - Mombasa</i>	-	-	<i>PSMSL</i>	<i>KPA</i>	-	<i>1975-1976</i>	-	<i>- data available at PSMSL</i>

4.1 Analysis and Interpretation

Table 3a:- Main tidal constituents from harmonic analysis results
Station Name: Mombasa

Constituent	Constituent name	Amplitude (cm)	Phase (deg)
M ₂	Principal Lunar semi diurnal	104.57	66.72
S ₂	Principal Solar semi diurnal	51.29	66.59
O ₁	Lunar declinational diurnal	11.45	242.62
K ₁	Luni-solar declinational diurnal	19.28	156.03
K ₂	Luni-solar declinational semi diurnal	13.93	203.83
N ₂	Larger Lunar elliptic semidiurnal	19.23	27.50

Table 3b:- Main tidal constituents from harmonic analysis results
Station Name: Lamu

Constituent	Constituent name	Amplitude (cm)	Phase (deg)
M ₂	Principal Lunar semi diurnal	97.90	227.36
S ₂	Principal Solar semi diurnal	48.60	72.80
O ₁	Lunar declinational diurnal	12.51	34.64
K ₁	Luni-solar declinational diurnal	20.79	160.92
K ₂	Luni-solar declinational semi diurnal	14.09	215.06
N ₂	Larger Lunar elliptic semidiurnal	18.01	233.28

Table 4: Tidal statistics, amplitudes and phases based on harmonic analysis.

Parameter	Formula	Mombasa station	Lamu station
Form number	$(K_1+O_1)/(M_2+S_2)$	0.20	0.23
Spring Range	$2.0(M_2+S_2)$	3.12 m	2.93 m
Neap Range	$2.0(M_2-S_2)$	1.07 m	0.99 m
Mean Range	$2.2(M_2)$	2.08 m	1.96 m

From harmonic analysis performed by SLPR2 software, the tidal characteristics for both Mombasa and Lamu stations are very similar as shown in Tables 3 and 4 above.

Table 5: KMFRI staff on sea level monitoring programme.

Staff	Mombasa	Lamu
Scientific	Dr. Charles Magori	Amon Kimeli
Technical	Zablon Onsare Okirigiti	Dismus Kosienny John Ochengo

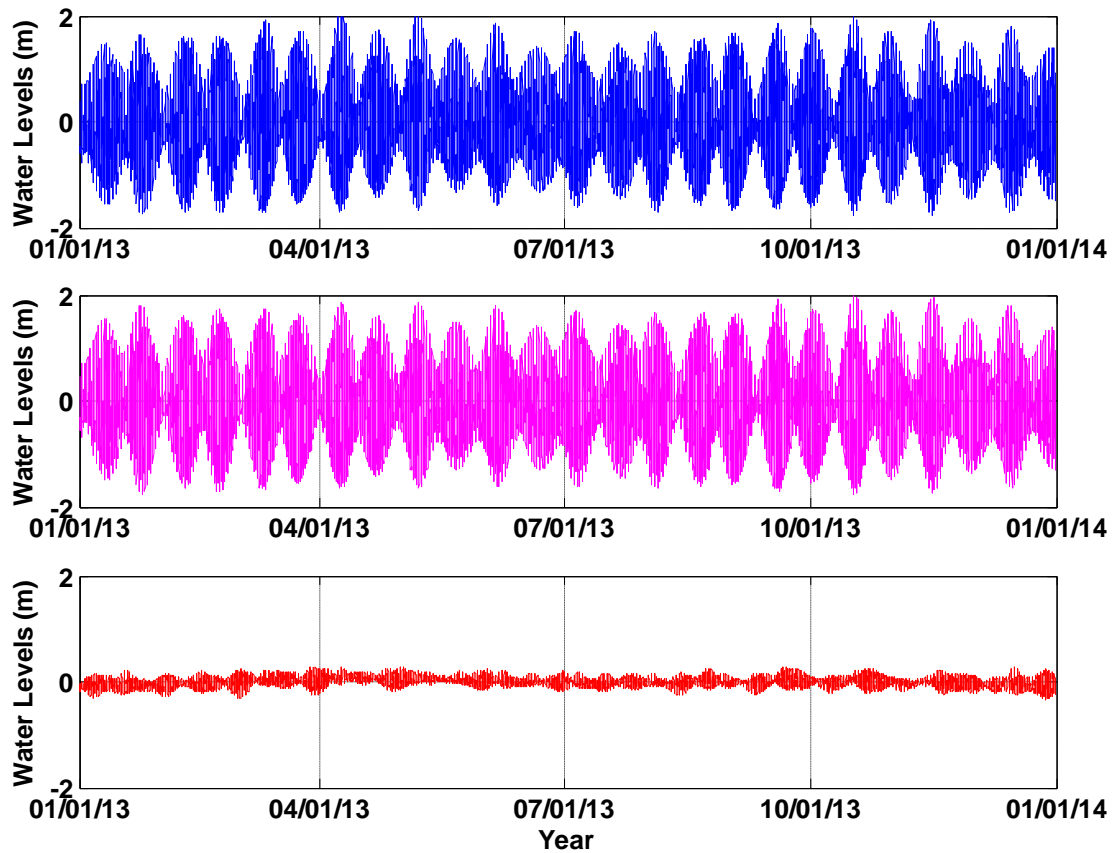


Fig 7: Graphs of Observed (blue), computed (magenta) and residual (red) using 2013 hourly sea levels for Mombasa by T_TIDE.

Validation results for Mombasa and Lamu for the period of 1 January 2013 to 1 January 2014 are shown in Figures 7 and 8. These are based on comparison between tide predictions (produced by constituents generated by harmonic analysis using 2013 sea level data for Mombasa and Lamu tide gauges) and actual observations. For both stations, the residuals are less than 20 cm indicating that the observed sea levels compare well with the predicted values.

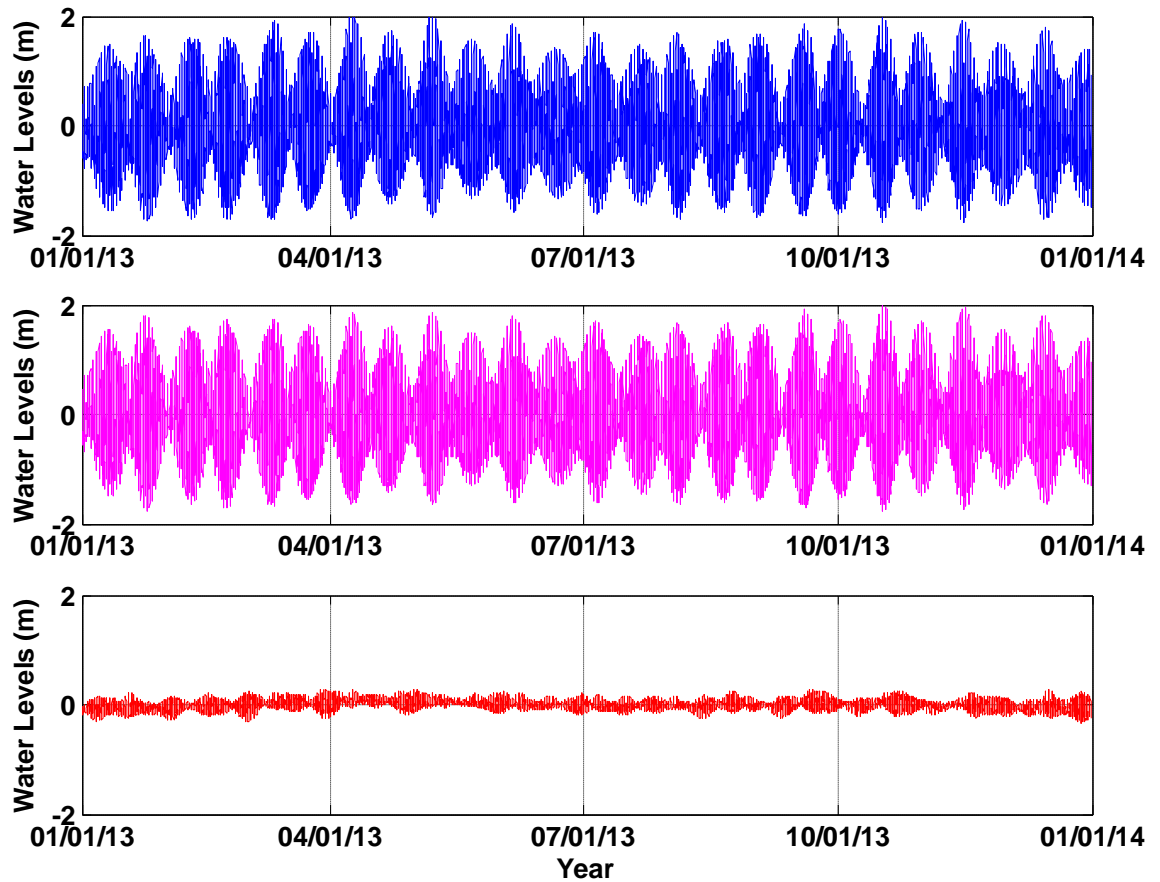


Fig 8: Graphs of Observed (blue), computed (magenta) and residual (red) using 2013 hourly sea levels for Lamu by T_TIDE.

In general, the selected datasets were subjected to the data management procedures, extraction of tidal constituents through harmonic analysis and finally the generation of tide predictions in form of high and low listings and hourly values for the specified period. Since the results may be affected by validation based on the output and known variations, the residuals were computed from a year whose data is outside the period used in the harmonic analysis phase.

A form number, F , has been defined as the ratio of the sum of amplitudes of diurnal tidal species over semi diurnal species. According to Defant (1958), a simplified definition for F , $F = (k_1 + O_1) / (M_2 + S_2)$, can be used to characterize tidal types. If F is less than 0.25, the tide is referred to as semi-diurnal, and if F is greater than 3.0, the tide is diurnal. Value of F between 0.25 and 3.0 are considered as mixed tides. From results of harmonic analysis, the form numbers for Mombasa and Lamu stations are 0.20 and 0.23 respectively, indicating that the tides are typically semi-diurnal. The spring tidal range for Mombasa and Lamu are 3.12 m and 2.93 m respectively while the corresponding neap range is 1.07 m and 0.99 m respectively (Table 4).

The residuals are small (~20 cm) for both stations as can be seen in Figures 7 and 8. They could be due to local forcing by wind stress and air pressure fluctuations. This indicates that meteorological forcing plays a minor role in the water level variations at both stations. It also further indicates that water level variations are exclusively driven by tidal forcing.

SLPR2 and T_TIDE softwares that were used have given fairly similar results of the harmonic constituents for each station (See Annex I). The tides can be characterised as being strongly semidiurnal, with the major constituents having similar amplitudes, phase lags and consequently similar tidal ranges for the two stations.

From observed data, water level variations at Mombasa and Lamu tide stations are sinusoidal with two unequal peaks daily. In addition, high water occurs in Mombasa roughly 5 minutes earlier than in Lamu. This phenomenon is also reproduced in high low listings and hourly values on the tide tables for both stations (Annex II).

Both tidal analysis softwares were able to resolve tidal constituents with higher periods. A total of 68 harmonics were generated with corresponding amplitudes and phase lags (Annex I). This is attributed to the one-year continuous hourly data set (with few gaps) that was used as input data in harmonic analysis.

5.0 Concluding Remarks and Recommendation

Water level variations in Mombasa station are typically semi-diurnal with spring tide range of 3.12 m and neap tide range of 1.07 m. The corresponding values for Lamu are 2.93 m and 0.99 m respectively. As indicated by the residuals, meteorological forcing due to wind stress or fluctuations in air pressure plays a minor role in the water level variations. At both stations, astronomical tides account for more than 90% of the water level variations.

SLPR2 and T_TIDE run on the same routine but operate on different environments. The two softwares generate exactly the same number of tidal constituents. Tide tables from both packages compare fairly well.

Both Mombasa and Lamu are principal stations on GLOSS network and are also dedicated components of the IOTWS. In order to enable Kenya to generate high quality sea level data and products for local scientists, regional as well as international oceanographic programmes and data centres and also IOTWS, there is an urgent need to develop technical capacity for installation and maintenance of tide gauges and also for analysis and quality control of sea level data.

There is sufficient scientific capacity for analysis and interpretation of sea level data in Kenya. Although a few of our tide gauge technicians have received in-service training and some additional hints during the visits to Kenya by field technicians from UHSLC, there is still limited capacity for repair and maintenance of the our tide gauges. WIOMSA could contribute to capacity building by providing Marine Research Grants (MARG II) for tide gauge technical staff.

The IOTWS fellowship programme on Sea Level Sciences and Applications programme should consider providing grants for our local technicians to visit specialised sea level data centres e.g UHSLC, PSMSL for internship. The topics to be covered during the internship should include review of sea level equipments, types, installation, levelling and maintenance as well as processing and quality control of data.

References

Bell C., J.M.Vassie, and P.L.Woodworth (1998): POL/PSMSL Tidal Analysis Software Kit 2000, CCMS Proudman Oceanographic Laboratory.

Caldwell P. (1998): Sea level Data processing On IBM-PC Compatible Computers version 3.0, University of Hawaii Sea Level Centre (UHSLC).

Defant, A. (1958): Ebb and Flow. Ann Arbor Science Paperbacks, Ann Arbor. 121p.

Pawlowisz R., Beardsley B. and Lentz S. (2002): Classical Tidal Harmonic Analysis Including Error Estimates in MATLAB using T_TIDE. *Computers and Geosciences*, Vol. 28, pp 921-937.

Annex I: Harmonic Constituents for Mombasa and Lamu Stations
Harmonic Analysis Results (by SLPR2 Software)

Mombasa Station

No.	Name	Frequency	Amplitude (cm)	Phase (degrees)
1	Z0	0.00000000	287.0746	0.00
2	SA	0.00011407	3.8323	326.23
3	SSA	0.00022816	2.1805	232.47
4	MSM	0.00130978	1.4136	29.54
5	MM	0.00151215	0.2188	115.52
6	MSF	0.00282193	0.2738	140.39
7	MF	0.00305009	1.6251	103.98
8	ALP1	0.03439657	0.0800	213.26
9	2Q1	0.03570635	0.3967	176.17
10	SIG1	0.03590872	0.4672	271.81
11	Q1	0.03721850	2.6461	213.45
12	RHO1	0.03742087	0.5031	296.55
13	O1	0.03873065	11.4497	242.62
14	TAU1	0.03895881	0.1305	236.92
15	BET1	0.04004043	0.0583	113.34
16	NO1	0.04026859	1.0655	153.90
17	CHI1	0.04047097	0.2373	196.61
18	PI1	0.04143851	0.2014	299.53
19	P1	0.04155259	5.5090	184.45
20	S1	0.04166667	1.9509	279.65
21	K1	0.04178075	19.2839	156.03
22	PSI1	0.04189482	0.0718	85.21
23	PHI1	0.04200891	0.1274	286.33
24	THE1	0.04309053	0.2631	72.55
25	J1	0.04329290	1.1462	181.55
26	SO1	0.04460268	0.1232	126.61
27	OO1	0.04483084	0.9538	266.86
28	UPS1	0.04634299	0.2098	313.12
29	OQ2	0.07597494	0.2907	353.66
30	EPS2	0.07617731	0.5773	79.69
31	2N2	0.07748710	2.1209	341.66
32	MU2	0.07768947	1.7164	100.72
33	N2	0.07899925	19.2309	27.50
34	NU2	0.07920162	3.9776	103.80
35	H1	0.08039733	1.4055	44.13
36	M2	0.08051140	104.5691	66.72
37	H2	0.08062547	0.4180	322.95
38	MKS2	0.08073957	1.3933	342.71
39	LDA2	0.08182118	1.0684	201.69
40	L2	0.08202355	3.5585	269.57
41	T2	0.08321926	3.2980	235.37
42	S2	0.08333334	51.2899	66.59

Harmonic Analysis Results (by SLPR2 Software)

Mombasa Station

No.	Name	Frequency	Amplitude (cm)	Phase (degrees)
43	R2	0.08344740	1.0329	26.72
44	K2	0.08356149	13.9268	203.83
45	MSN2	0.08484548	0.0786	208.79
46	ETA2	0.08507364	0.6838	221.30
47	MO3	0.11924210	0.2441	55.59
48	M3	0.12076710	0.2360	17.66
49	SO3	0.12206400	0.0241	192.79
50	MK3	0.12229210	0.1648	228.35
51	SK3	0.12511410	0.1239	171.81
52	MN4	0.15951060	0.5044	163.48
53	M4	0.16102280	1.2621	216.99
54	SN4	0.16233260	0.1900	185.74
55	MS4	0.16384470	0.7113	211.80
56	MK4	0.16407290	0.2040	358.41
57	S4	0.16666670	0.2954	196.22
58	SK4	0.16689480	0.1803	340.19
59	2MK5	0.20280360	0.0407	10.38
60	2SK5	0.20844740	0.0823	83.12
61	2MN6	0.24002200	0.0127	296.60
62	M6	0.24153420	0.0888	233.14
63	2MS6	0.24435610	0.2856	232.84
64	2MK6	0.24458430	0.0694	328.24
65	2SM6	0.24717810	0.1102	237.79
66	MSK6	0.24740620	0.0854	29.52
67	3MK7	0.28331490	0.0365	164.15
68	M8	0.32204560	0.0890	115.57

Harmonic Analysis Results (by SLPR2 Software)

Lamu Station

No.	Name	Frequency	Amplitude (cm)	Phase (degrees)
1	Z0	0.00000000	226.8187	0.00
2	SA	0.00011407	3.0283	313.27
3	SSA	0.00022816	4.2109	173.24
4	MSM	0.00130978	1.0775	345.23
5	MM	0.00151215	1.3954	347.27
6	MSF	0.00282193	0.8059	171.35
7	MF	0.00305009	1.7470	334.94
8	ALP1	0.03439657	0.2656	262.21
9	2Q1	0.03570635	0.4477	77.60
10	SIG1	0.03590872	0.6134	229.68
11	Q1	0.03721850	2.8312	48.88
12	RHO1	0.03742087	0.4264	196.34
13	O1	0.03873065	12.5106	34.64
14	TAU1	0.03895881	0.5272	33.85
15	BET1	0.04004043	0.1686	3.08
16	NO1	0.04026859	1.2200	221.21
17	CHI1	0.04047097	0.2610	338.10
18	PI1	0.04143851	0.3412	31.02
19	P1	0.04155259	5.5317	206.35
20	S1	0.04166667	2.0385	288.56
21	K1	0.04178075	20.7877	160.92
22	PSI1	0.04189482	0.1643	348.54
23	PHI1	0.04200891	0.3315	266.69
24	THE1	0.04309053	0.3407	337.53
25	J1	0.04329290	1.3453	163.19
26	SO1	0.04460268	0.5794	65.55
27	OO1	0.04483084	1.4206	153.17
28	UPS1	0.04634299	0.2533	154.50
29	OQ2	0.07597494	0.1731	352.66
30	EPS2	0.07617731	1.0488	115.12
31	2N2	0.07748710	1.6268	252.12
32	MU2	0.07768947	2.6589	92.39
33	N2	0.07899925	18.0132	233.28
34	NU2	0.07920162	3.7702	18.47
35	H1	0.08039733	0.8558	257.32
36	M2	0.08051140	97.9024	227.36
37	H2	0.08062547	0.4774	99.92
38	MKS2	0.08073957	0.3500	131.18
39	LDA2	0.08182118	1.4018	228.09
40	L2	0.08202355	3.3389	26.97
41	T2	0.08321926	3.4597	267.92
42	S2	0.08333334	48.5989	72.80

Harmonic Analysis Results (by SLPR2 Software)

Lamu Station

No.	Name	Frequency	Amplitude (cm)	Phase (degrees)
43	R2	0.08344740	0.5820	59.06
44	K2	0.08356149	14.0940	215.06
45	MSN2	0.08484548	0.3193	159.39
46	ETA2	0.08507364	0.6877	209.84
47	MO3	0.11924210	0.8960	39.59
48	M3	0.12076710	0.2601	211.79
49	SO3	0.12206400	0.6765	251.41
50	MK3	0.12229210	0.7041	151.69
51	SK3	0.12511410	0.5326	19.04
52	MN4	0.15951060	0.9179	215.39
53	M4	0.16102280	2.3698	211.13
54	SN4	0.16233260	0.4169	95.07
55	MS4	0.16384470	1.9457	62.18
56	MK4	0.16407290	0.5481	218.35
57	S4	0.16666670	0.6311	281.98
58	SK4	0.16689480	0.3324	67.39
59	2MK5	0.20280360	0.2319	184.26
60	2SK5	0.20844740	0.1166	172.00
61	2MN6	0.24002200	0.3343	298.99
62	M6	0.24153420	0.5930	293.58
63	2MS6	0.24435610	1.1048	155.54
64	2MK6	0.24458430	0.2677	289.98
65	2SM6	0.24717810	0.3953	354.95
66	MSK6	0.24740620	0.2259	137.61
67	3MK7	0.28331490	0.0744	151.30
68	M8	0.32204560	0.2102	290.67

Harmonic Analysis Results (by T_TIDE Software)

Mombasa Station

No.	Name	Frequency	Amplitude (cm)	Phase (degrees)
1	Xo	0.0000000	287.00	0.00
2	SA	0.0001141	2.51	162.78
3	SSA	0.0002282	1.12	27.05
4	MSM	0.0013098	0.66	23.00
5	MM	0.0015122	0.14	321.83
6	MSF	0.0028219	0.45	351.48
7	MF	0.0030501	1.35	27.42
8	ALP1	0.0343966	0.07	309.05
9	2Q1	0.0357064	0.3	332.54
10	SIG1	0.0359087	0.44	344.54
11	Q1	0.0372185	2.21	1.63
12	RHO1	0.0374209	0.5	358.06
13	O1	0.0387307	11.49	0.89
14	TAU1	0.0389588	0.13	335.65
15	BET1	0.0400404	0.18	351.41
16	NO1	0.0402686	1.6	273.83
17	CHI1	0.0404710	0.17	46.15
18	PI1	0.0414385	0.14	87.40
19	P1	0.0415526	5.43	354.12
20	S1	0.0416667	2.42	311.99
21	K1	0.0417807	18.97	354.56
22	PSI1	0.0418948	0.17	327.35
23	PHI1	0.0420089	0.34	324.02
24	THE1	0.0430905	0.32	346.94
25	J1	0.0432929	1.07	345.98
26	SO1	0.0446027	0.13	56.28
27	OO1	0.0448308	1.11	7.49
28	UPS1	0.0463430	0.23	41.05
29	OQ2	0.0759749	0.17	210.21
30	EPS2	0.0761773	0.2	44.68
31	2N2	0.0774871	1.67	318.22
32	MU2	0.0776895	1.53	23.99
33	N2	0.0789992	18.78	4.49
34	NU2	0.0792016	3.99	2.95
35	H1	0.0803973	1.1	2.07
36	M2	0.0805114	103.85	25.27
37	H2	0.0806255	0.64	84.10
38	MKS2	0.0807396	0.52	356.10
39	LDA2	0.0818212	1.16	46.57
40	L2	0.0820236	3.07	36.12
41	T2	0.0832193	3.02	55.74
42	S2	0.0833333	51.49	64.31

Harmonic Analysis Results (by T_TIDE Software)

Mombasa Station

No.	Name	Frequency	Amplitude (cm)	Phase (degrees)
43	R2	0.0834474	0.58	75.55
44	K2	0.0835615	14.38	62.33
45	MSN2	0.0848455	0.29	289.02
46	ETA2	0.0850736	0.55	64.64
47	MO3	0.1192421	0.32	147.61
48	M3	0.1207671	0.33	131.49
49	SO3	0.1220640	0.11	154.16
50	MK3	0.1222921	0.19	32.82
51	SK3	0.1251141	0.17	334.81
52	MN4	0.1595106	0.66	100.54
53	M4	0.1610228	1.13	136.53
54	SN4	0.1623326	0.03	195.61
55	MS4	0.1638447	0.59	172.55
56	MK4	0.1640729	0.17	179.76
57	S4	0.1666667	0.26	195.64
58	SK4	0.1668948	0.12	190.03
59	2MK5	0.2028035	0.01	32.77
60	2SK5	0.2084474	0.08	294.32
61	2MN6	0.2400221	0.03	203.77
62	M6	0.2415342	0.04	125.51
63	2MS6	0.2443561	0.24	139.13
64	2MK6	0.2445843	0.06	166.25
65	2SM6	0.2471781	0.14	201.60
66	MSK6	0.2474062	0.08	186.26
67	3MK7	0.2833149	0.04	244.35
68	M8	0.3220456	0.05	315.56

Harmonic Analysis Results (by T_TIDE Software)

Lamu Station

No.	Name	Frequency	Amplitude (cm)	Phase (degrees)
1	Xo	0.0000000	227.00	0.00
2	SA	0.0001141	3.03	145.93
3	SSA	0.0002282	4.21	44.51
4	MSM	0.0013098	1.08	153.40
5	MM	0.0015122	1.39	13.12
6	MSF	0.0028219	0.8	5.22
7	MF	0.0030501	1.75	40.15
8	ALP1	0.0343966	0.26	5.47
9	2Q1	0.0357064	0.4	341.17
10	SIG1	0.0359087	0.59	3.99
11	Q1	0.0372185	2.61	345.69
12	RHO1	0.0374209	0.42	354.37
13	O1	0.0387307	11.81	4.31
14	TAU1	0.0389588	0.49	64.62
15	BET1	0.0400404	0.16	323.74
16	NO1	0.0402686	0.74	61.43
17	CHI1	0.0404710	0.24	2.99
18	PI1	0.0414385	0.34	352.23
19	P1	0.0415526	5.56	0.02
20	S1	0.0416667	2.91	316.47
21	K1	0.0417807	19.95	358.53
22	PSI1	0.0418948	0.16	25.98
23	PHI1	0.0420089	0.32	345.62
24	THE1	0.0430905	0.32	343.51
25	J1	0.0432929	1.18	42.35
26	SO1	0.0446027	0.55	96.11
27	OO1	0.0448308	1.03	36.28
28	UPS1	0.0463430	0.2	66.16
29	OQ2	0.0759749	0.17	80.50
30	EPS2	0.0761773	1.06	60.00
31	2N2	0.0774871	1.63	5.16
32	MU2	0.0776895	2.68	62.60
33	N2	0.0789992	18.12	11.38
34	NU2	0.0792016	3.79	14.55
35	H1	0.0803973	0.86	51.91
36	M2	0.0805114	98.71	31.34
37	H2	0.0806255	0.48	97.82
38	MKS2	0.0807396	0.32	149.39
39	LDA2	0.0818212	1.42	19.78
40	L2	0.0820236	4.71	40.33
41	T2	0.0832193	3.46	75.28
42	S2	0.0833333	48.57	72.92

Harmonic Analysis Results (by T_TIDE Software)

Lamu Station

No.	Name	Frequency	Amplitude (cm)	Phase (degrees)
43	R2	0.0834474	0.48	77.35
44	K2	0.0835615	12.95	69.38
45	MSN2	0.0848455	0.32	185.25
46	ETA2	0.0850736	0.6	82.01
47	MO3	0.1192421	0.85	173.15
48	M3	0.1207671	0.26	97.76
49	SO3	0.1220640	0.64	221.09
50	MK3	0.1222921	0.68	153.24
51	SK3	0.1251141	0.51	216.69
52	MN4	0.1595106	0.93	157.42
53	M4	0.1610228	2.41	179.06
54	SN4	0.1623326	0.42	233.15
55	MS4	0.1638447	1.96	226.25
56	MK4	0.1640729	0.51	236.78
57	S4	0.1666667	0.63	282.12
58	SK4	0.1668948	0.31	282.04
59	2MK5	0.2028035	0.23	350.12
60	2SK5	0.2084474	0.11	9.96
61	2MN6	0.2400221	0.34	45.15
62	M6	0.2415342	0.61	65.47
63	2MS6	0.2443561	1.12	123.59
64	2MK6	0.2445843	0.25	112.36
65	2SM6	0.2471781	0.4	159.09
66	MSK6	0.2474062	0.21	156.15
67	3MK7	0.2833149	0.07	119.97
68	M8	0.3220456	0.22	226.86

Annex II: High – Low Tide Predictions for Mombasa and Lamu Stations

Annex III: Hourly Tide Predictions for Mombasa and Lamu Stations

Detailed plan of activities for sea level monitoring programme in Kenya.

Activity	Project Period 2014-15 FY			
	Q1	Q2	Q3	Q4
Quality control of sea level data	■			
Harmonic Analysis of sea level data	■			
Generation of tide predictions		■		
Calibration and validation of tide predictions		■		
Packaging of tide tables in booklet format			■	
Distribution of tide tables to stakeholders			■	
Update of sea level database	■	■	■	■
Report preparation and submission		■		■