

Report

Saint Lucia Sea Level Station

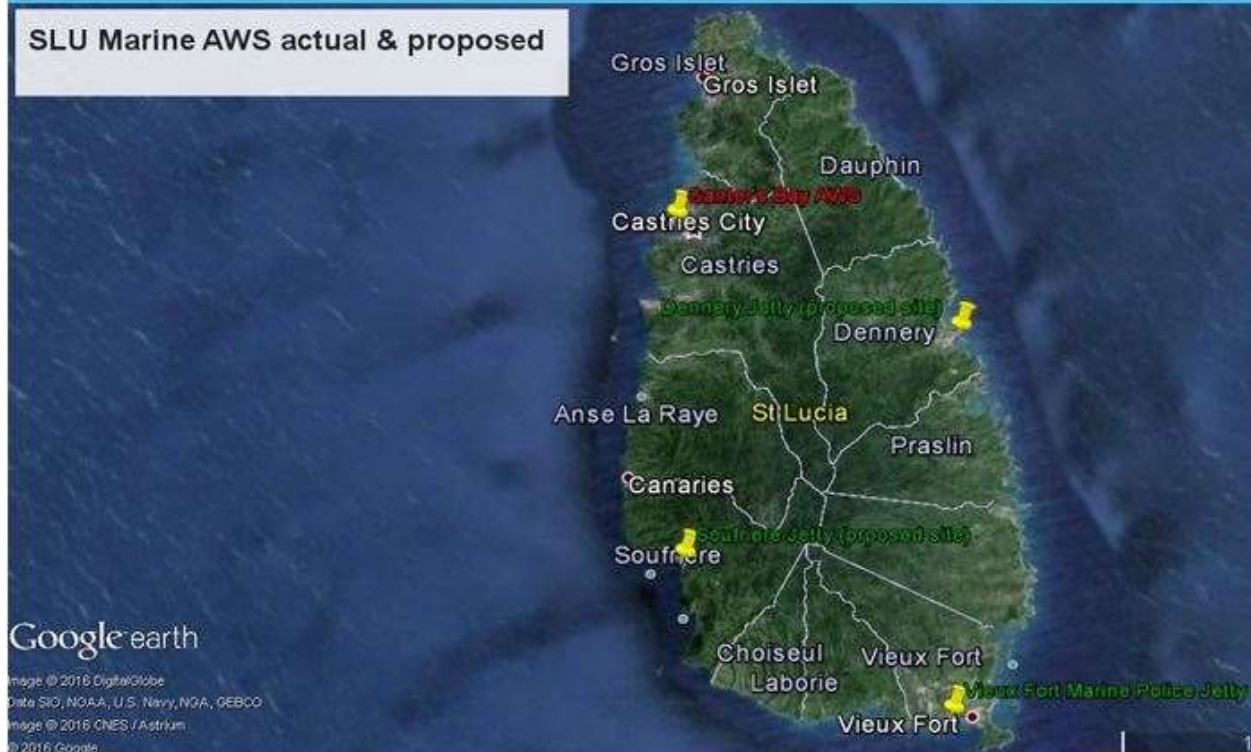
1. Date of Report: March 1, 2018
2. Title: Report on Sea Level Station Operations in Saint Lucia
3. Name(s), address(es), tel/fax/email of the author(s)

Mr. Govinda Augustin,
Saint Lucia Meteorological Services
George F.L. Charles Airport / Castries
758 – 452 - 5860 (Tel)
758 – 459 - 0487 (Fax)
758 – 718 –1301(Cel)
goaugustin@gosl.gov.lc

4. Map(s) of tide gauge network in country or region



SAINT LUCIA TIDE GAUGE STATION

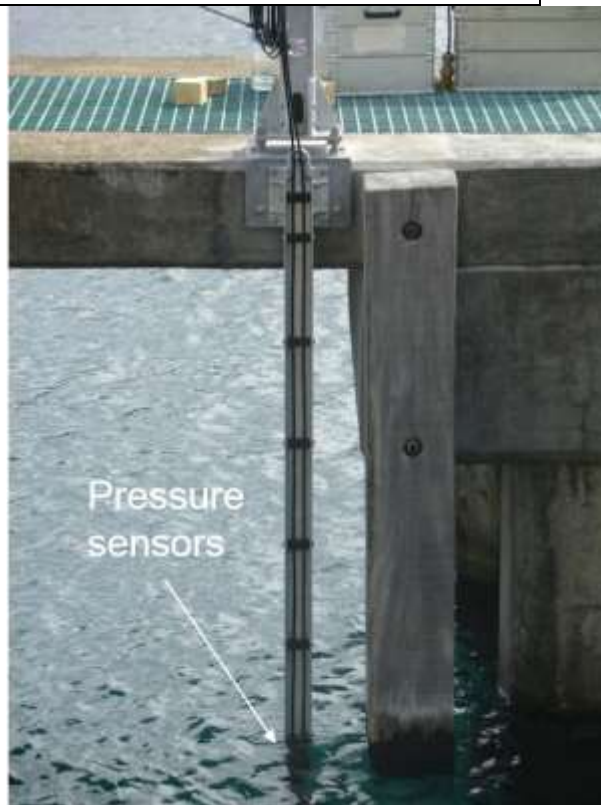


5. Tide Gauge Site

Name:	Ganter's Bay, Saint Lucia
Station Code:	stlu
Latitude	14.016428
Longitude	-60.997351
Date Installed	October 2016
Status	Operational
Operator:	Saint Lucia Meteorological Office

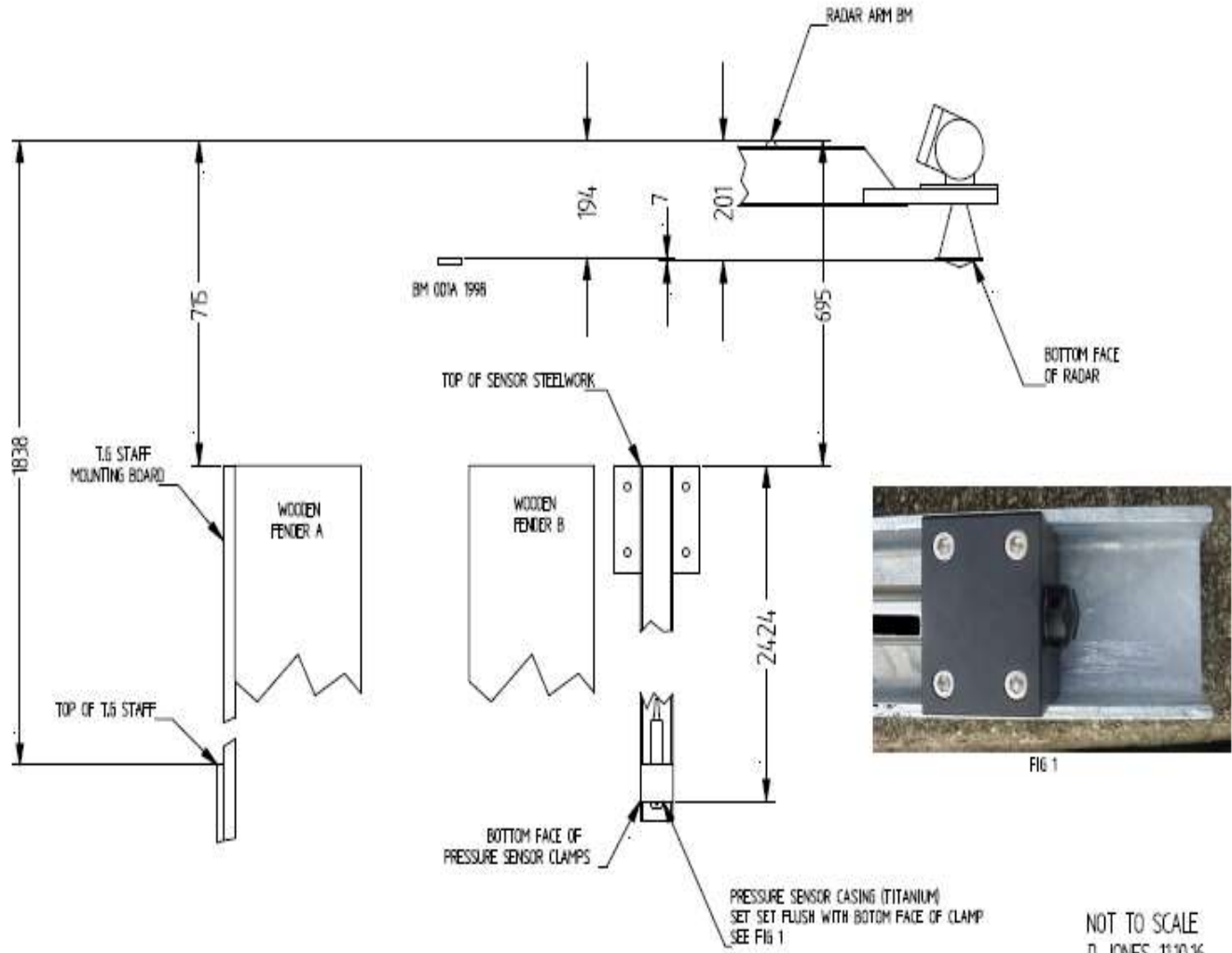
6. An overview of the gauge technology employed in the network

Communications	GOES
GOES PID	6B00103C
WMO Header	SOLC10
GOES Channel	211
Transmit Period	5 mins
Sampling Rate	1 min for sensors, 5 mins for battery
GLOSS Station ID	N/A
DCP	WaterLOG Data logger
GPS	Yes
Sensor(s)	Radar(Nile Radar), 2 Pressure Probes (OTT), Battery



7. Leveling:

ST LUCIA T.G – LEVELING SCHEMATIC

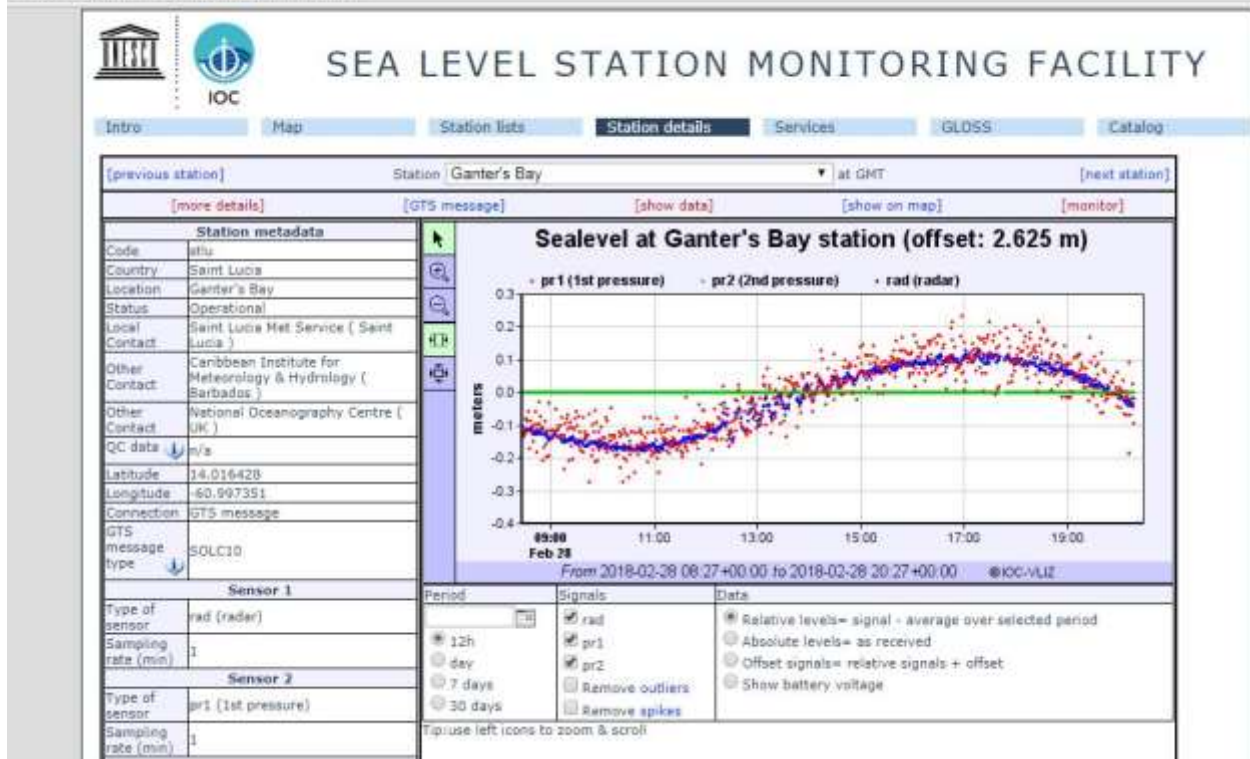


Please note that additional benchmarks are to be installed.

8. An overview of the data availability:

Saint Lucia tide gauge data can be obtained either via direct download from the data logger or from the IOC Sea Level Monitoring Facility.

www.ioc-sealevelmonitoring.org/station.php



www.ioc-sealevelmonitoring.org/bgraph.php?code=stlu&output=tab&period=0.5

Tide gauge at Ganter's Bay				
Time (UTC)	bat(V)	pr1(m)	pr2(m)	rad(m)
2018-02-28 08:27:00		0.417	0	2.505
2018-02-28 08:28:00		0.389	0	2.505
2018-02-28 08:29:00		0.395	0	2.504
2018-02-28 08:30:00		0.395	0	2.506
2018-02-28 08:31:00	12	0.442	0	2.518
2018-02-28 08:32:00		0.409	0	2.51
2018-02-28 08:33:00		0.437	0	2.513
2018-02-28 08:34:00		0.464	0	2.513
2018-02-28 08:35:00		0.351	0	2.514
2018-02-28 08:36:00	12	0.434	0	2.516
2018-02-28 08:37:00		0.401	0	2.508
2018-02-28 08:38:00		0.408	0	2.52
2018-02-28 08:39:00		0.373	0	2.505
2018-02-28 08:40:00		0.407	0	2.498
2018-02-28 08:41:00	12	0.424	0	2.5

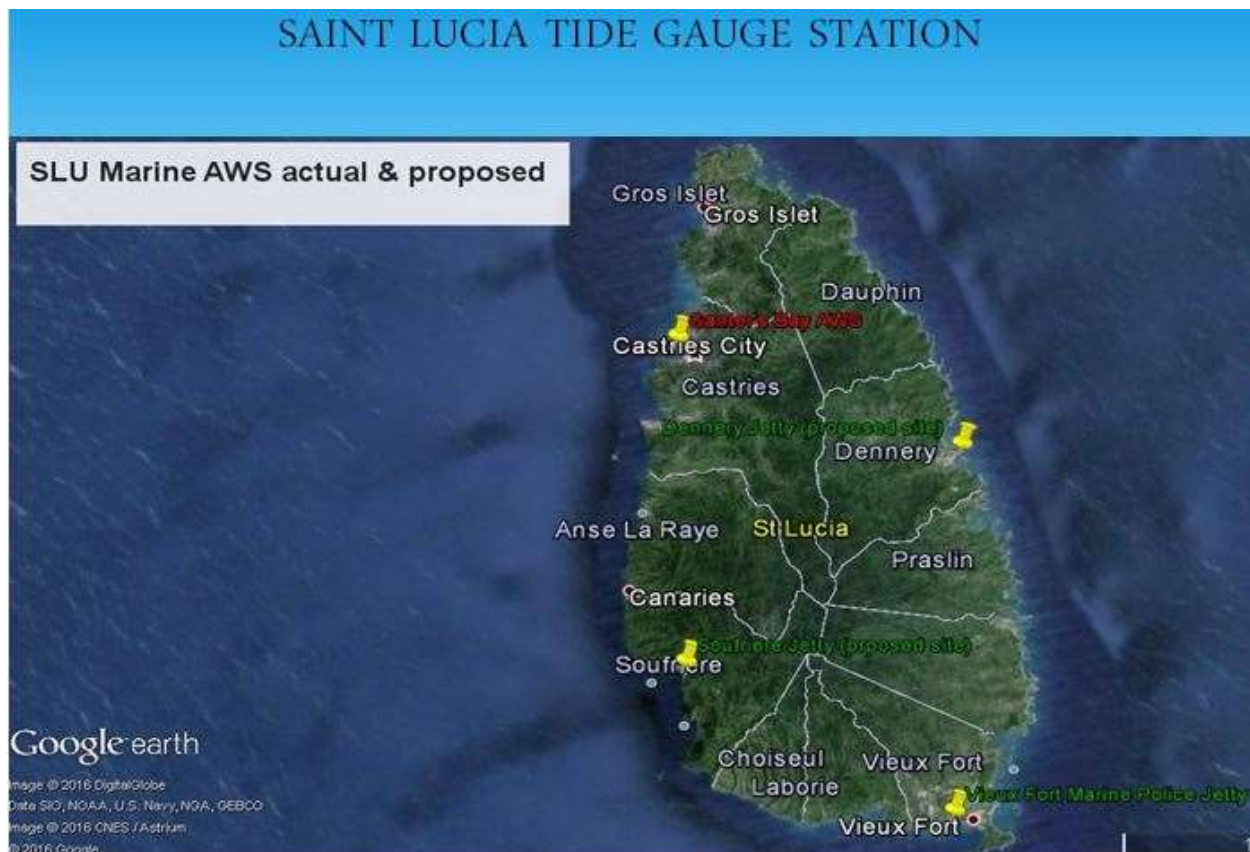
9. Web, email etc. addresses of data banks and of sources of further information

Mr. Venantius Descartes
Director Meteorological Service
vdescartes@gosl.gov.lc

Mr. Lemuel O'Shaughnessy
Meteorological Technician
olecart@hotmail.com

10. Future Plans.

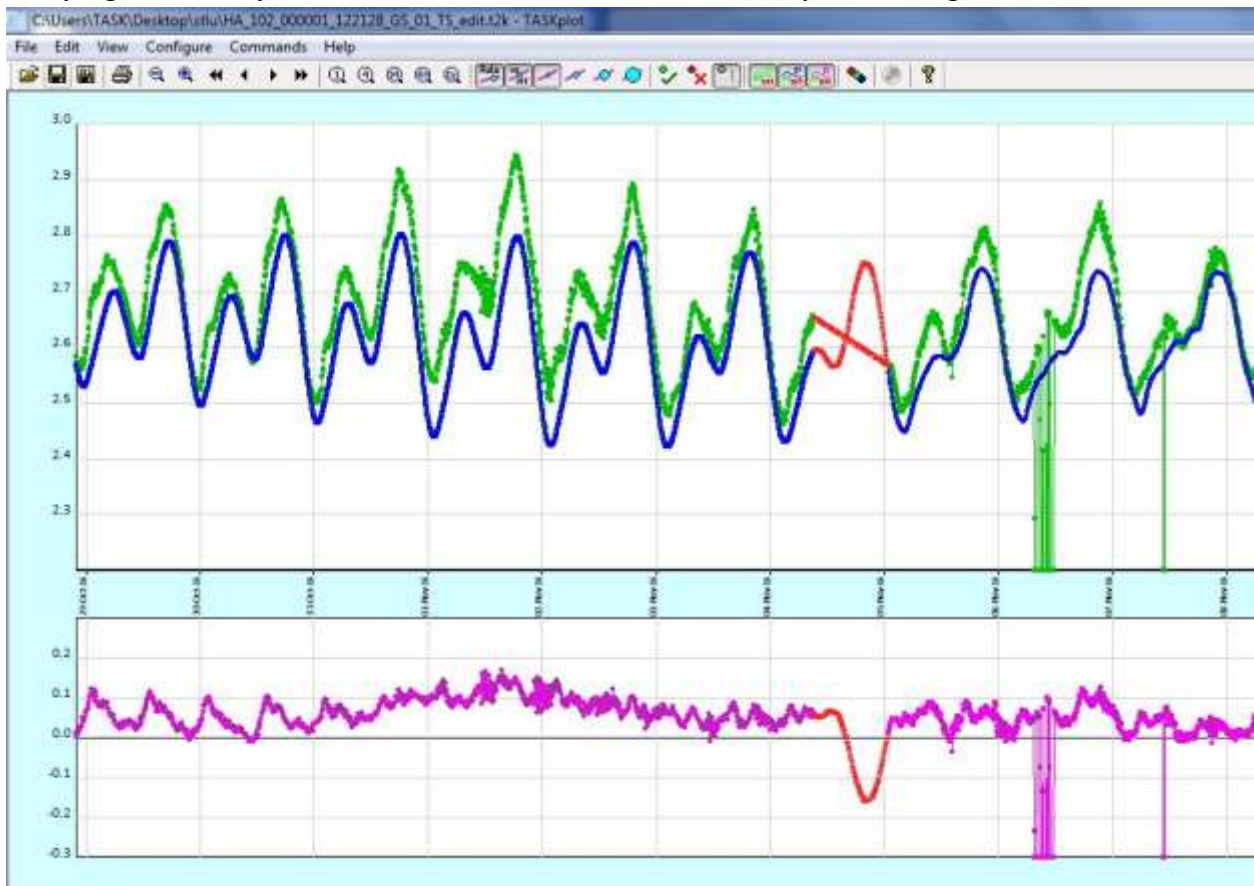
To expand on our tide gauge network providing data from the West, East and South coasts of the island.



Through this training we are now able to carry out quality checks our data. Also we are able to produce output products using the processed data.

It is also important to note that we do tide pole measurements during our maintenance visits. This data is emailed to PSMSL for analysis.

Carrying out Quality Checks on the data from the Ganter's Bay Tide Gauge.



Using the analyzed data at Ganter's Bay Tide Gauge to produce Tide Tables

GANTERS BAY

Time Zone: +0400 Datum : Chart Datum Year : 2018

January			February		
	Time	m		Time	m
1 M	0300	2.58	16 Tu	0344	2.53
	0703	2.50		0713	2.49
	1325	2.85		1412	2.72
	2056	2.27		2138	2.29
2 Tu	0345	2.59	17 W	0416	2.54
	0757	2.49		0754	2.49
	1422	2.85		1453	2.72
	2146	2.25		2213	2.29
3 W	0429	2.60	18 Th	0453	2.54
	0848	2.49		0833	2.49
	1518	2.84		1531	2.72
	2238	2.25		2248	2.30
4 Th	0518	2.61	19 F	0535	2.56
	0942	2.50		0919	2.50
	1611	2.82		1610	2.71
	2330	2.28		2322	2.32
1 Th	0409	2.59	16 F	0418	2.56
	0846	2.45		0855	2.47
	1520	2.79		1522	2.69
	2221	2.27		2210	2.34
2 F	0454	2.61	17 Sa	0451	2.57
	0947	2.45		0939	2.47
	1613	2.75		1602	2.67
	2308	2.30		2236	2.36
3 Sa	0541	2.63	18 Su	0521	2.59
	1054	2.45		1030	2.46
	1709	2.70		1648	2.65
	2351	2.34		2306	2.38
4 Su	0626	2.65	19 M	0549	2.60
	1211	2.45		1126	2.45
	1809	2.65		1742	2.61
				2342	2.40

Great emphasis is placed on our tide gauge maintenance programme, as you can see.



THANK YOU.....